

The Monticello Park  
Neighborhood Association

*Presents*

The Seventh Annual  
“At Home in Monticello”  
Tour of Homes

Sunday, November 3, 2002

2002 Monticello Park  
Neighborhood Association

*EU*

Executive Committee

Jennifer Yard – *President*  
Paul C. Stahl – *Vice President*  
Sonny Rodriguez – *Treasurer & Tour Co-Chair*  
Emilie Ehrisman – *Secretary*

Board Members

Ed Arguello  
Jesse Gonzales  
Eric Lane  
Maiki Machiela – *Tour Co-Chair*  
Tony Sanchez  
Robert Sipes

*The 2002 Board of Directors wishes to thank you for your  
interest in our neighborhood and hopes you enjoy being  
“At Home In Monticello”*

The Association would like to thank our neighbors who have graciously opened their homes for this year's tour. They have been very gracious in sharing their historic homes with all of us. We know you'll agree that the hard work they have put into renovating and revitalizing their homes has truly paid off!

We would also like to thank the many volunteers who worked so hard to put this event together. Without the support of our generous sponsors and patrons this event would not be possible. We encourage you to remember them with your patronage.

Our neighborhood takes pride in the wide variety of shapes, styles, colors and personalities in each of our homes. They are all unique, and they are all special. We wish a speedy recovery to those of our neighbors who were unable to participate in our tour because of setbacks that occurred due to the July flood.

2002 “At Home in Monticello”  
Tour Sponsors and Patrons

Sponsors

**Mayor Ed Garza**  
**State Representative Trey Martinez Fischer**  
**H.E.B. Corporation**  
**John Moore, Town & Country Mortgage Services**  
**Andy Simpson, [www.archemedia.com](http://www.archemedia.com)**  
**Burton Rose Gonzales, Architects**  
**H.L. Metzger, Cool Crest Golf**  
**Annabelle Kirkwood, Monte Vista Realty**

Neighborhood Patrons

**Roy & Di Galvan**  
**Cynthia Moore**  
**Victor & Lisa Negron**  
**Jan Paranteau**  
**Sonny Rodriguez**  
**Susanne Rodriguez**  
**Paul & Cathy Stahl**  
**Dale & Jamie Wilson**  
**Melanie Young**

We would like to thank Luis Moreno of AT&L Distributors for donating the wines featured in each of our homes and thanks to All Four Seasons and RTC Florist for donating the flower arrangements used in several of the homes.

# Welcome to Beautiful Monticello Park



Welcome – and look around you. The Monticello Park historic district is bursting with life. We are a community working together to beautify our neighborhood. As you make yourself “At Home In Monticello” you support our efforts to transform and revitalize our Monticello City Park into an aesthetically pleasing gathering space.

The homes of Monticello Park are an extraordinary collection of architecture including English, French and Spanish Colonial, Greek Revival, Italianate, Victorian, Tudor, Mission and Art Moderne. Virtually every house exhibits the handiwork of individual artisans. Notice the masonry, the plaster work, the Mexican Mission tile, the arches and built-ins, cartouches and turrets – all touches that make these homes unique.

The area was once a dairy farm owned by George Calvert. Mr. Calvert sold his farm to developers and Monticello Park, originally called Woodlawn Terrace, grew from the 1920s to the 1940s. Its growth reflected the Roaring 20s, the Great Depression and finally World War II. The neighborhood attracted the growing class of merchants and professionals of the time. Many of the homes we designed by the San Antonio architect Nathan Straus Nayfach.

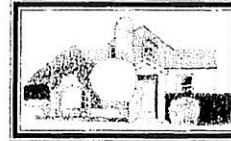
One of the developers, Leo S. Karen, sold a portion of land to the San Antonio Independent School District for approximately 1.25 million dollars. On it was built the crown jewel of our neighborhood, Thomas Jefferson High School. The Spanish Baroque building was designed by Max Frederick and built in 1932, much to the dismay of some who believed it to be in the middle of nowhere. Furr Drive was designed to afford a view of the spectacular dome which was originally done in colorful tile.

We thank you for your interest and we hope you enjoy our neighborhood as much as we do!

# 2002 “At Home in Monticello” Featured Homes



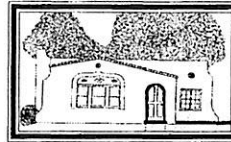
467 Mary Louise



128 Furr Drive



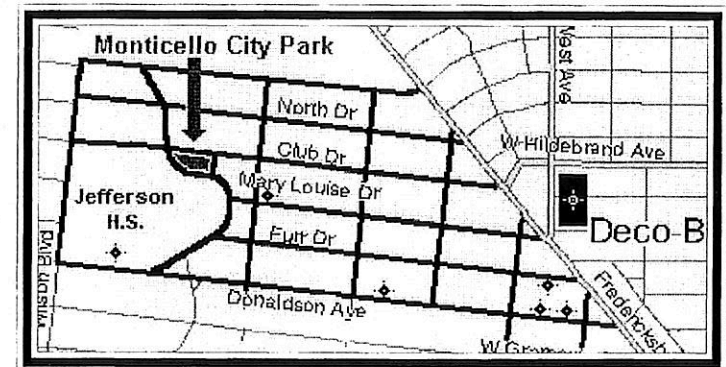
447 Donaldson



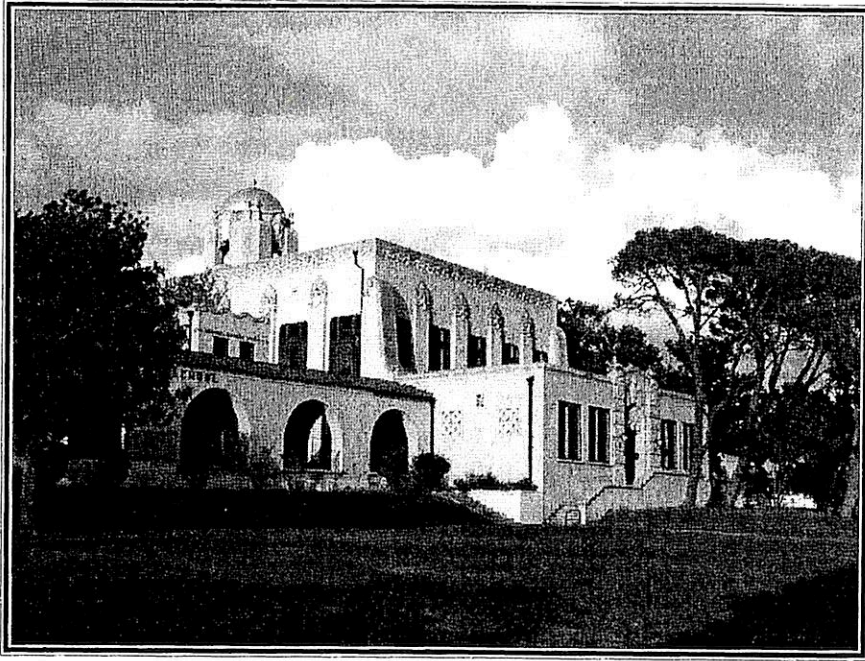
237 Donaldson



209 Donaldson



We would like to thank Marci Gutierrez and her Jefferson High School Art Students for providing their artwork of the homes.



Thomas Jefferson High School  
723 Donaldson Avenue

Designed the year of the stock market crash (1929) by the architecture firm Adams & Adams, the palatial Spanish Colonial Revival building was an extravaganza of lavish detail inspired by San Antonio's missions as well as Spain's Alhambra. Churrigueresque columns around the grand entrance recall the elaborately carved stone trimming Mission San Jose, while a silver-capped, domed tower crowns the school in Mission style. Art Deco cast stone ornaments suggesting Maya headdresses trim the upper part of the building, and the elaborate detailing continues inside.

Jefferson High School made such a splash when it opened in 1932 that it was featured in *Life Magazine* and *National Geographic* in the 1930s and 1940s. Two movies starring Jane Withers were made on the campus: *High School* (1938) and *Texas Girl* (1939). Today, Jefferson High School is designated a Texas Landmark and is on the National Register of Historic Places.

Like movie extras from that era, you are invited to stroll through Jefferson's beautiful halls, view the awe-inspiring auditorium, and enjoy the spacious grounds and gardens.



The Geis Home at 467 Mary Louise

This Austin cut limestone home is one of the "newer" in the neighborhood. It was built in 1951 by the Frost Carvel architecture firm, for which the owners have blueprints, and utilizes design features from blueprints completed in 1941 by the firm of Atlee Ayres and Robert Ayres. The home was built for the S. J. Younes family in a "ranch style." The house is placed on the site so that each window has a pleasant view. The owners were attracted to the neighborhood, as well as the home. Returnees from the suburbs, they enjoy the proximity to work, city amenities and the quality of life.

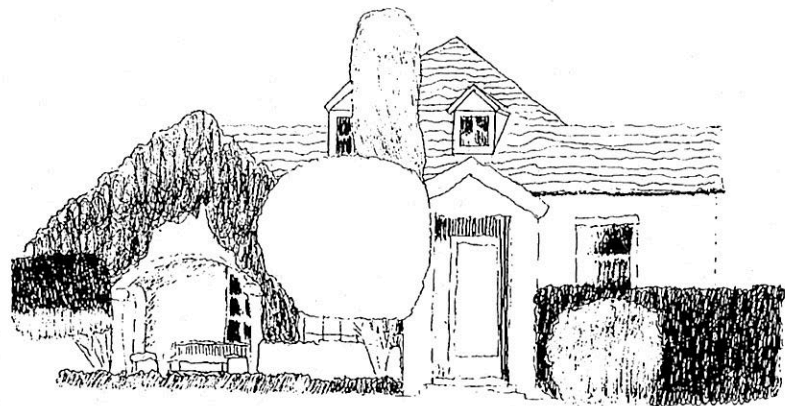
The home is entered through a large front door opening off the comfortable tiled porch. The present owners have redecorated the home to reflect more modern design with large-scale furnishings that fit well in the home's spacious rooms. Plantation shutters streamline window treatments. The living room is painted a deep moss green and cushy furniture is set off by pieces of architectural art, including two sections of an antique iron fence. Architectural art is used throughout the home. The beautiful Oriental rug came from the shop of neighbor Basil Scaljon.

The dining room is centered on the massive marble table, designed in an irregular shape by the owners to create a sense of the marble slab having been wrested directly from the earth. The large fixture above the table and the art on the walls continue the sense of mass and strength. The kitchen has been completely redone by the present owners and features bird's eye maple cabinets. The floors are slate, as are the countertops with tumbled marble edging. Rearranged for convenience, the new kitchen functions as beautifully as it looks.

Off the kitchen is the concrete tiled breakfast room, painted a taupe inspired by the tiles. The room has built in shelves and a view out the large windows of the garden that brightens the beginning of the day. A den, also floored in concrete tiles, features a cozy leather couch for TV viewing. The room can be closed off from the hallway by pocket doors.

The long hall of the bedroom wing leads first to the nursery where the young resident enjoys sophisticated decor. The room of the resident princess is across the hall, where to owner has painted a wainscot that picks up design from the room's molding. It is notable the crown molding in each room of the house is of a different design.

The hall bath has an unusual original tub and a new glass brick window. The Master bedroom features a large tester bed. The rear bedroom has a metal bed and an antique armoire and dresser.



The Mijangos Home at 128 Furr Drive

This home is a charming 1930's brick cottage with arched front porch has a fairy tale quality. The cozy living room boasts a fireplace and an arched window, which echoes the front porch arch. The owners have used an antique chair and antique trunk used as a coffee table to accent the room. The room contains a spiral staircase, which leads to an attic hideaway. The side porch with its white columns has a long bench where one can sit and enjoy the beauty of the large tree and the beds of ivy, which surround the home.

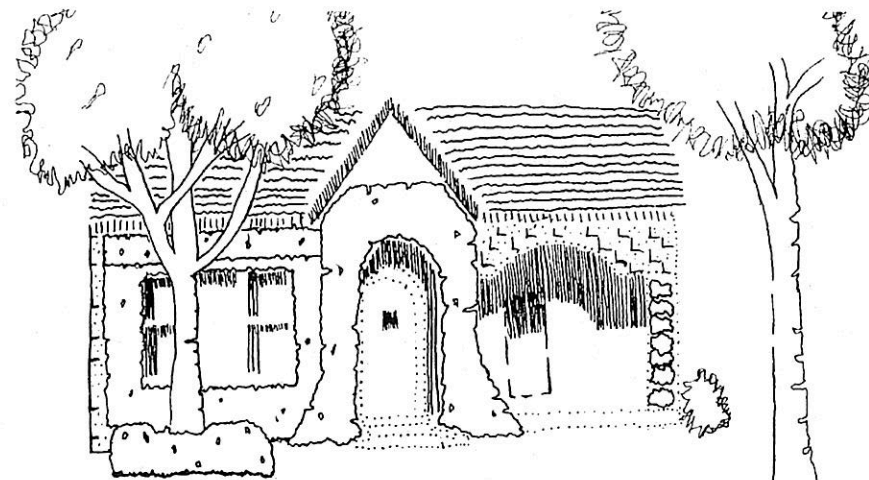
The arch into the dining room continues the cottage feeling. The custom made table allows ample seating for special occasions on the antique chairs around it. The rustic china cabinet introduces the female owner/decorator's frequent juxtaposition of rustic antiques with finely finished pieces. The three paintings in the room, as well as in the breakfast area, are by the male owner's father, artist Alberto Mijangos. Woodwork in the room has been refinished.

Moving into the breakfast area of the home, one immediately sees the charming built-in hutch, re-tiled in the process of updating and enlarging the kitchen. A stained glass frame from an old window surrounds the window. The owners found the wood floors under layers of varied flooring. The use of the bottom portion of a Hoosier cupboard for storage, and the use of a fireplace mantel as a plant shelf continues the mix of antiques with modern furnishings. The glass fronted cabinets and Mexican tile counter tops enhance a comfortable family kitchen.

Beyond the kitchen, the back yard contains a spacious deck and a play structure used and appreciated by the children of the home. The shaded yard makes a pleasant family retreat. From the kitchen, a hallway leads to the bedrooms. The hall boasts a mosaic mirror crafted by the owner. The unique telephone niche was designed to pass through to the living room.

The master bedroom and bath includes built-in storage that was created by the owners from the original kitchen cabinets. French doors open onto the deck.

The son's room holds an antique bed and rustic cupboard. The daughter's room also has a rustic cabinet and decor by the female owner, featuring antique plates. The main bath was updated and currently improved by the owner's addition of crown molding.



The Orozco Home at 447 Donaldson Avenue

This home, long known as the "ivy-covered cottage" of the neighborhood, was built in 1928. With its arched side porch, lined by a flagstone walkway, serves as a welcoming spot for morning coffee, the home demonstrates on the outside the warmth within.

From the arched cottage-style wood door, one sees the living room fireplace with its decorative tile surround and original tile hearth. Decorated with deco inspired couch and chairs, room features sheer-lined cottage style shutters. An archway leads to the cheerful yellow dining room furnished with a Colonial style dining set refinished by the owners. The small study off the dining room features a display of pictures relating to features of the neighborhood.

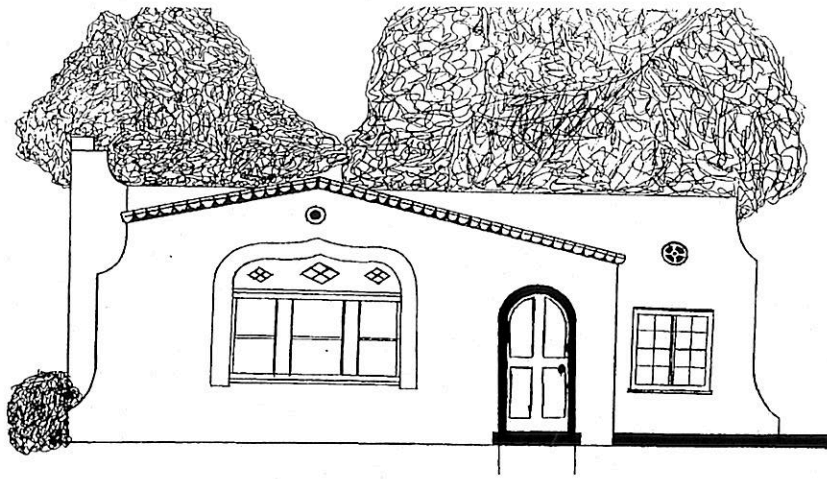
The kitchen features the original counter and sink, with open cupboards above. The kitchen has, as does the entire home, the original hardwood floors. Served by a closet pantry, the kitchen opens into a hall serving the three bedrooms. At the end of the hall is the built-in telephone niche.

Both bathrooms feature walls sponge painted by the owners. The baths have the original fixtures.

The front bedroom has become a TV room for the family and is a comfortable place to relax. The middle bedroom is headquarters for the family's young son and features prize items showing his interests.

The master bedroom is spacious and features a sitting area, with a long window seat and built in bookcases, incorporated from a one-time porch. This currently serves as a nursery. Art works above the bed are from the SaySi workshop for student artists in the Blue Star complex.

In the comfortable back yard, the son enjoys the wooden play structure as his little sister looks forward to the use of the sandbox. The enclosed garden shower provides a quick way to cool off or clean up. In the rear flowerbed is a pet cemetery with markers honoring family friends of previous owners.



The Jefferson Home at 237 Donaldson Avenue

This stucco home in brilliant white, with dramatically contrasting red outlining at the window, was built in 1928. The current owners are only the third in the home's history. Inside the cottage style front door of this home to a young family, the warm peach living room with textured plaster walls is furnished with antiques, including the upright piano from 1911 that belonged to the owner's grandmother. The piano is topped with the father's collection of "babies" which come from family and friends on special occasions. The tray ceiling provides a dramatic feature to the room. The fireplace, with the original tile on the hearth, features a niche that makes the perfect display space for a modern sculpture.

The adjoining dining room, framed by an arch, is furnished with an attractive antique dining set of the same era as the home. Art in the room has been collected from a variety of sources, including the owner's best friend. The home has hardwood floors throughout. A swinging door with an arch and glass panes leads to the comfortable, modernized kitchen, which incorporates vivid color and includes a glass brick inset in the breakfast area, providing cheerful light to begin the day.

The mission style back door leads to the child friendly back yard. A large two level deck and graveled play space make it an area where children can play freely. An apparently home designed shrine incorporating stones and shells is in the back yard.

The three bedrooms include a room in bright green for the son, a space that provides for plenty of entertainment as well as for bedtime needs. The room is enlivened by an animated picture from Warner Brothers that includes sound and movement. The daughter's future bedroom is a lovely blue. It is furnished with more of grandmother's heirlooms with a bedroom set from the same time period as when the home was new. The master bedroom includes a cedar-lined closet. With a large tester type bed and TV, it offers a comfortable retreat.

The bath with original fixtures includes tile updated by the present owners to include special tiles in the bath enclosure, which feature names of the family members. A polka dotted shower curtain and lively color bring a fresh breeze to the space. Overall the home combines brilliant color with modern and traditional furnishings.



The Yard Home at 209 Donaldson Avenue

This 1935 house has a fantasy feeling, with the crenellated roofline over the covered porch and porte-cochere. The stucco home with brick wainscot presents its mini-castle front to the street.

Inside, the living room focuses on the fireplace with the brick trim painted a vibrant deep color, matched to the front wall. The tray ceiling takes the eye upward. A photo screen displays photographs taken by the owner, which are also on display throughout the home. The furnishings are a mix of traditional and modern, with a streamlined rocking chair of the owner's design and making. The walls are a heavily textured plaster, which resembles creamy folds of fabric.

The dining room is entered through a notched archway and features a Jacobean dining room set, part of the owner's family for four generations. It has survived a trip to Germany and many moves to many homes to find a place here.

The spacious kitchen, modernized by a previous owner, presently offers ample space for the owner's king size canine companion. It also offers opportunity for the present owner's renovation plans. The silverware handles on the cupboards add a touch of whimsy.

The long hallway is painted in a bright harlequin design and hung with the owner's photos. The master bath retains the original tub and arched tub enclosure. The owner continues to use creative painting methods to give the ceiling a sky-with-clouds treatment.

The master bedroom, an addition made a few years after the home was built, is a spacious retreat with separate bath. The furnishings are arts and crafts style, with an Indian-Oriental overlay. The guest bedroom contains the dollhouse made by the owner's grandparents and remodeled as the owner began to develop architectural interests and skills.

In the front of the home, featuring an arched window with unusual wooden casement windows, is the home office/study. An intense blue wall sparks the room. An ingenious computer cabinet keeps the work clutter contained.

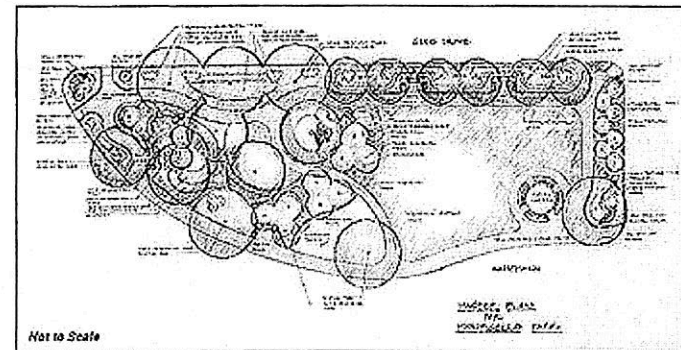
The back yard features a large covered patio and shade created by the large pecan tree. Plans for enhancing this shady retreat are on the owner's drawing board, while it serves as a cool retreat now.

## AIA San Antonio Monticello Park Pavilion Design Competition

In celebration of National Community Service Month the local San Antonio chapter of the American Institute of Architects held a design competition. AIA chapters across the country hosted activities in an effort to promote architectural awareness in our communities. In keeping with this years theme of 'Service by Design' the local San Antonio chapter of the AIA held a competition to design a new pavilion for our very own Monticello City Park.

Competition entries are on display at Jefferson High School. Finalists will be chosen by a jury composed of local residents, artists, architects and our City Councilman, Julian Castro. The Monticello Park Neighborhood Association will select which entry will ultimately get built out of the four semi finalists. The final design must meet approval from the Parks Department, the Parks and Recreation Advisory Board and the Historical Design Review Commission.

The proceeds from your support of our tour are being used to help fund the construction of the pavilion that will soon grace our beautiful Monticello City Park. The pavilion will be used as a restful and contemplative space for the solitary user and a sheltered gathering space for small groups. It will serve as a platform for community venues such as small musical ensembles and speakers.



We would like to express our deepest appreciation to the San Antonio AIA, the competition participants and especially to the following Design Competition Committee Members that worked so hard on this project.

**Neven Jones (Chairperson)**  
**Aaron Clark (Associate Director)**  
**Jamie Martinez**  
**Agdel Rivera**  
**Jennifer Yard (MPNA President )**

**Gilbert Candia**  
**Christopher Derrington**  
**Dale Riser**  
**Jennifer Siu**